

INTRODUCING



A new way to exchange bottles and cans for CRV.

BottleBank is San Francisco's new, easy-to-use, mobile, CRV redemption service for beverage containers. Here are the essentials to help get you started!

CREATE AN ACCOUNT

To create a BottleBank account, download and open the BottleBank mobile app. Select "Don't have a login" and input the necessary details, which includes a verification code you'll get by text message at the end.



Once you have an account, it's time to get Blue Bags and redeem CRV containers.

BUY & FILL BAGS

To redeem CRV containers with BottleBank, you'll need to return them in a CRV Blue Bag, and your first two bags are free upon sign up! Additional bags can be purchased at any CRV bag drop or at participating retailers. At mobile sites, the cost of bags is deducted from your account balance.



All CRV containers - aluminum, glass, and plastic - can be placed in the same bag, but **don't crush your containers**. Only uncrushed CRV containers are accepted.

When filling Blue Bags, make sure you cinch the bag closed tightly to keep the containers inside, and put less than 30 glass bottles inside to keep each bag under 20 lbs.

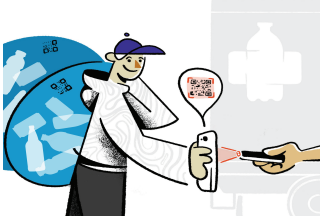
MORE 



CHECK-IN & DROP-OFF

With your Blue Bags filled and tied, it's time to find a mobile drop site, which you can view in the app's "Locations" tab.

At the mobile drop site, a BottleBank attendant will scan the digital card in your app and the QR code printed on each of your Blue Bags. These two scans activate and associate the bag(s) with your BottleBank account. After this, leave your bag(s) with the BottleBank attendant, and we'll do the rest.



CASH OUT

Your bag(s) will be processed within 72 hours of when you drop them off. Once counted, the CRV of your containers will immediately be added to your BottleBank account.

With each bag you return, your balance will grow, and you can access your funds anytime. Start by linking your BottleBank account with a Venmo, PayPal, or bank account in the app's Activity tab. Tap "\$ Transfer" and then "+ Add Account" to add each desired account you want to link. Once account information is confirmed, you can start making transfers. It pays to recycle.



NO SMARTPHONE?

If you don't have a way to use the mobile app, just visit a BottleBank bag drop location, and an attendant can help you create an account. You'll get a physical account card, which enables you to access BottleBank without the app.

QUESTIONS?

Visit sfbottlebank.org or the BottleBank app to learn more.

CRV bag redemption fees for BottleBank are waived during the pilot period. Terms and conditions apply.

