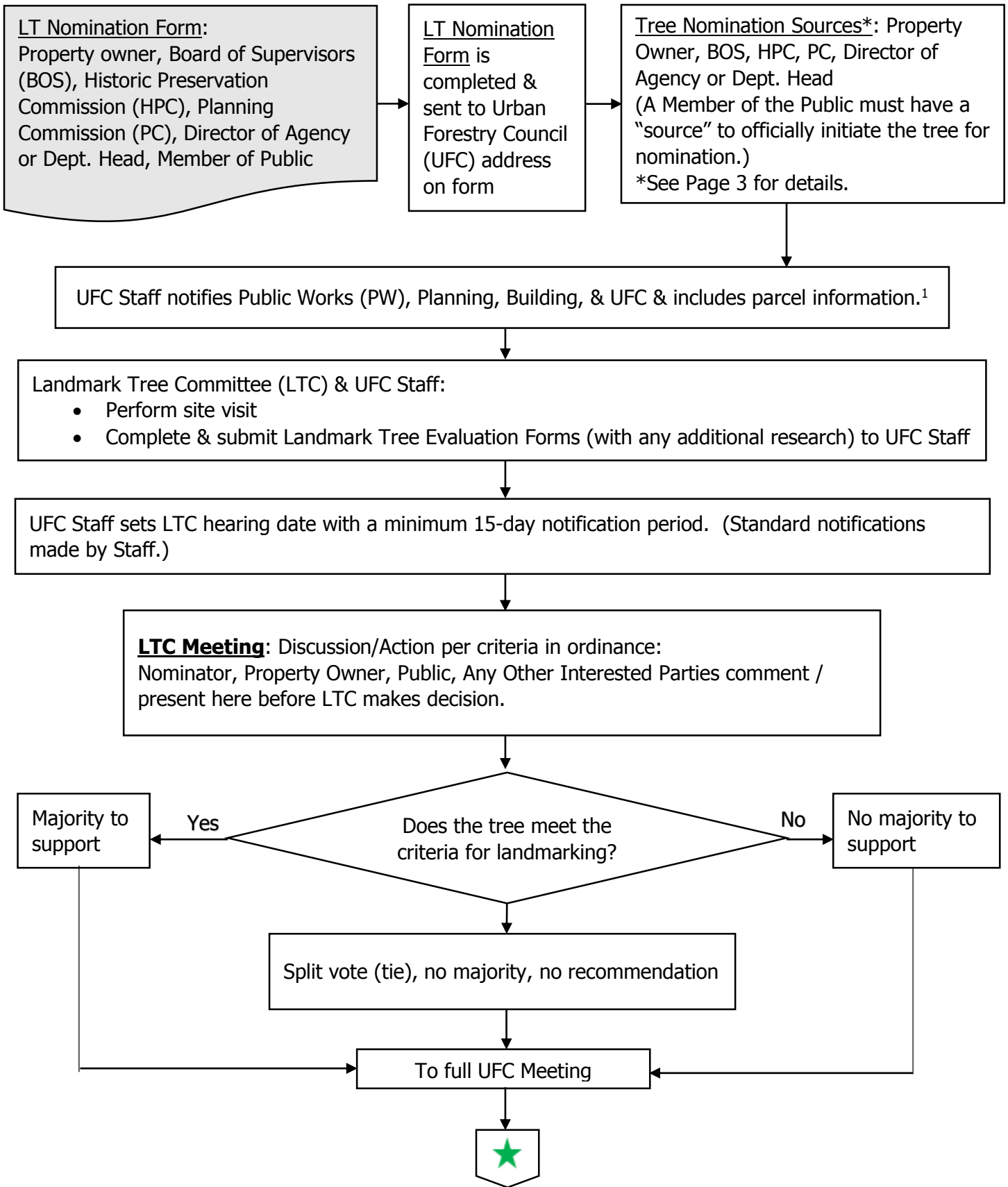


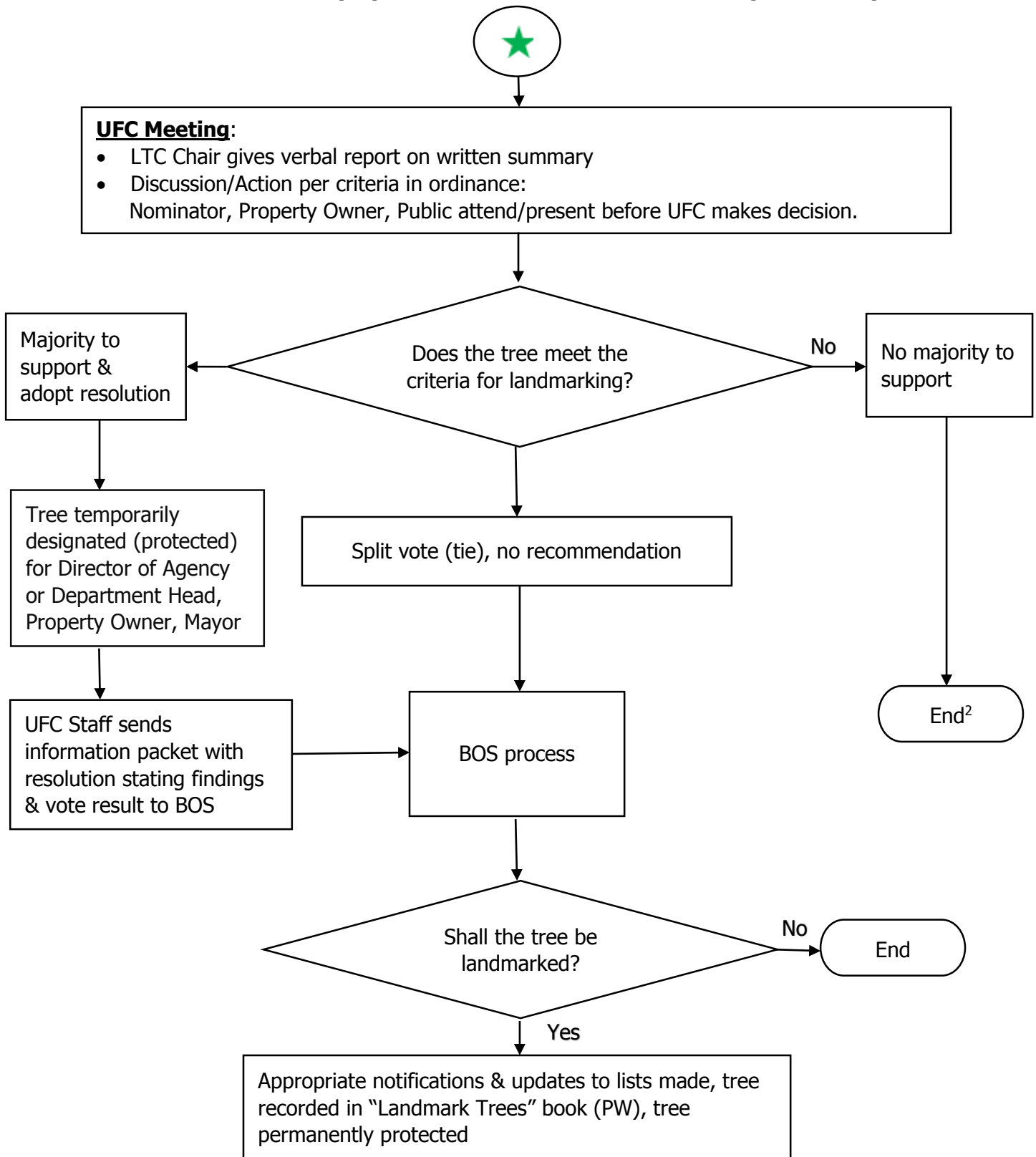
## Landmark Tree (LT) Nomination Process Flowchart



NOTE: LT process flow charts intended as a graphic guide, not exhaustive. Refer to LT Ordinance (PW Code Sec. 810). <sup>1</sup> File of nominations kept with UFC Staff.

0303LTCchanges

## Landmark Tree (LT) Nomination Process Flowchart (continued)



<sup>2</sup> If tree is protected (i.e. "temporary designation"), protection ends. Tree cannot be nominated again for 3 years.

## Landmark Tree (LT) Nomination Process Flowchart (continued)

\* Sources for tree nomination (See top right box on Page 1):

1. Historic Preservation Commission (HPC)
2. Planning Commission (PC)
3. Board of Supervisors (BOS)
4. Mayor
5. Director of Public Works (PW); Dir. of City Agency, Commission or Dept. Head
6. Property Owner

**1. (HPC) or 2. (PC) Adopts resolution of intent to initiate nomination to UFC**

- Tree temporarily designated (protected) as LT at resolution adoption
- Commission informs Director of PW who notifies Department or Property Owner

**3. Member of BOS introduces resolution of intent to initiate**

Tree temporarily designated (protected) as LT at resolution introduction

**4. Mayor or 5. Director of PW, Director of City Agency Commission or Dept. Head<sup>1</sup> or 6. Property Owner initiates LT designation**

Temporary designation (protection) occurs when UFC adopts resolution that tree qualifies for LT designation

**OPTIONAL:** Director of PW issues EMERGENCY ORDER temporarily designating tree on property under its jurisdiction to prevent immediate removal of tree

NOTE: LT process flow charts intended as a graphic guide, not exhaustive. Refer to LT Ordinance (PW Code Sec. 810). <sup>1</sup>Nominations via letter directly to UFC staff.

0303LTCchanges